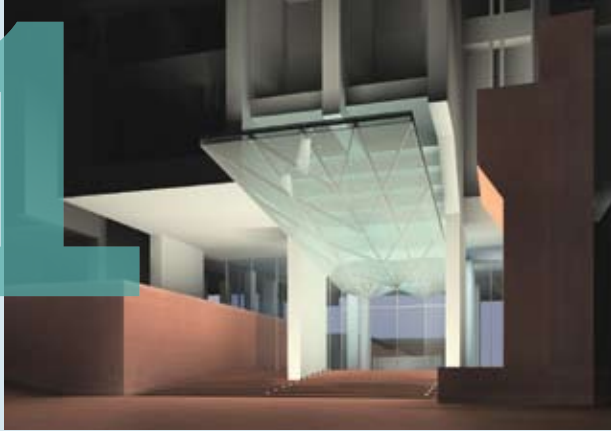


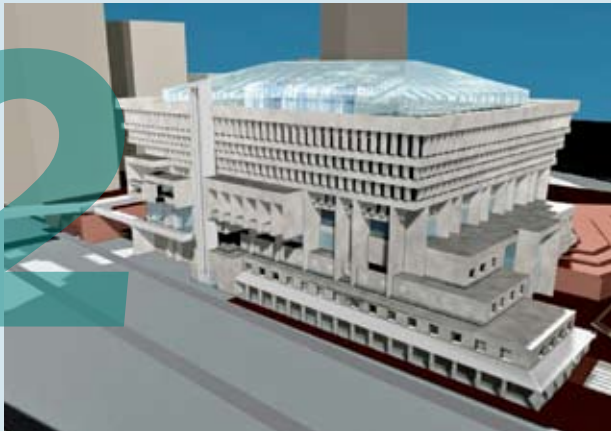
PAST FUTURES

Proposals to fix City Hall and its Plaza



1. CITY HALL ENTRANCE STUDY: SCHWARTZ/SILVER ARCHITECTS, 2005.

Focusing on the main entrance, this proposal, commissioned by the city, addressed maintenance problems and security requirements as well as the dark and confusing entry sequence. The proposal featured a lighted glass canopy, which continued into the lobby to bring luminosity to the ceiling, new entry steps and doors, and an expanded lobby — all encouraging greater public use of the building for exhibits, special events, and functions.



2. GREEN CITY HALL: HENRY MACLEAN AIA (WITH FACULTY AND STUDENTS FROM WENTWORTH INSTITUTE OF TECHNOLOGY), 1997.

This proposal, which featured the reclamation of 100,000 square feet of space (including the open courtyard) as well as energy savings (in 1997 dollars) of \$1 million per year, projected a seven-year payback. In addition to green strategies, the proposal included a rooftop restaurant and conference facility and a retail arcade along Congress Street. (www.timearch.com/ProjCHReview.html)



3. CITY HALL PLAZA: CHAN KRIEGER SIENIEWICZ (WITH HARGREAVES ASSOCIATES AND PRELLWITZ & CHILINSKI), 1994–2003.

Based on a fundamental rethinking of the Plaza, this series of proposals, projected to cost up to \$250 million, included: a Congress Street pedestrian bridge to Faneuil Hall; new planting, paving, street furniture, and public art; a new T station pavilion, including new Blue Line connections; the reintroduction of Hanover Street to reconnect Beacon Hill to the North End; an arcade along Cambridge Street; and a new hotel at the northern edge to provide 24-hour activity and financial support for the Plaza.

4. CITY HALL PLAZA: HENRY WOOD FAIA IN ASSOCIATION WITH PRESSLEY ASSOCIATES, 2004.

This proposal responds to criticisms of the Plaza but holds costs down by retaining and adapting many elements of the existing plaza. The concept features a “green bracelet” of trees around the central forecourt (retained for special events and rallies) and moving water, including a cascade down the JFK steps, which are modified for seating, trees, and grass. The amount of grass, trees, water, and seating is greater than in Post Office Square.

